

# Edi's R and RStudio Tips and Tricks

Raphael Edison Most

23 11 2022

## Contents

<b>Warning vs. Error</b>	<b>2</b>
<b>Colour-blind friendly colours in R</b>	<b>3</b>
<b>RStudio Settings</b>	<b>4</b>
Where are the settings? . . . . .	4
Save Workspace . . . . .	5
Soft-Wrap . . . . .	6
Encoding . . . . .	7
Auto-save . . . . .	8
Appearance . . . . .	9

## Warning vs. Error

R is a command-oriented program, it does exactly what it is told.  
If you don't tell it to show what it did, it will not show you anything.

Warnings and Errors are not the same - with warnings the code worked - R just wants to make you aware of things.

In case of an error, work yourself from the inside out.  
`plot(function(function(->dataset$variable<-)), plot.options)`

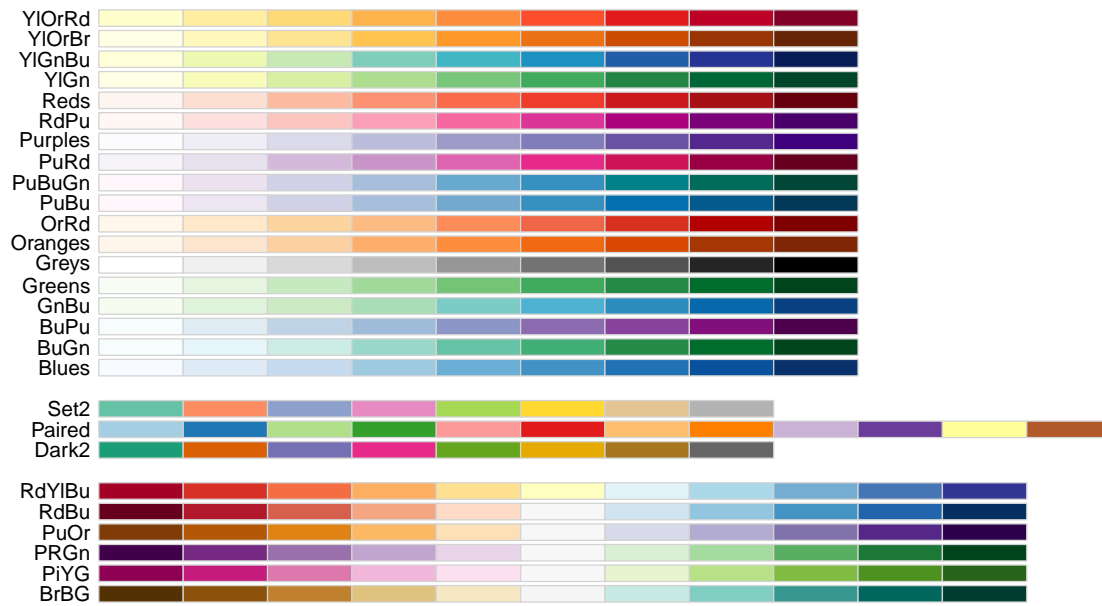
If you get an error that you can't solve, copy and Google it!

An example of a warning (from code we later use) that we inspect and then ignore because the code still does what we want.

```
data_excel <- read_excel("data_excel_metal_bands_2017.xlsx")  
  
## Warning: Expecting numeric in C4444 / R4444C3: got '-'  
## Warning: Expecting numeric in C4601 / R4601C3: got '-'  
## Warning: Expecting numeric in C4823 / R4823C3: got '-'  
## Warning: Expecting numeric in C4950 / R4950C3: got '-'
```

# Colour-blind friendly colours in R

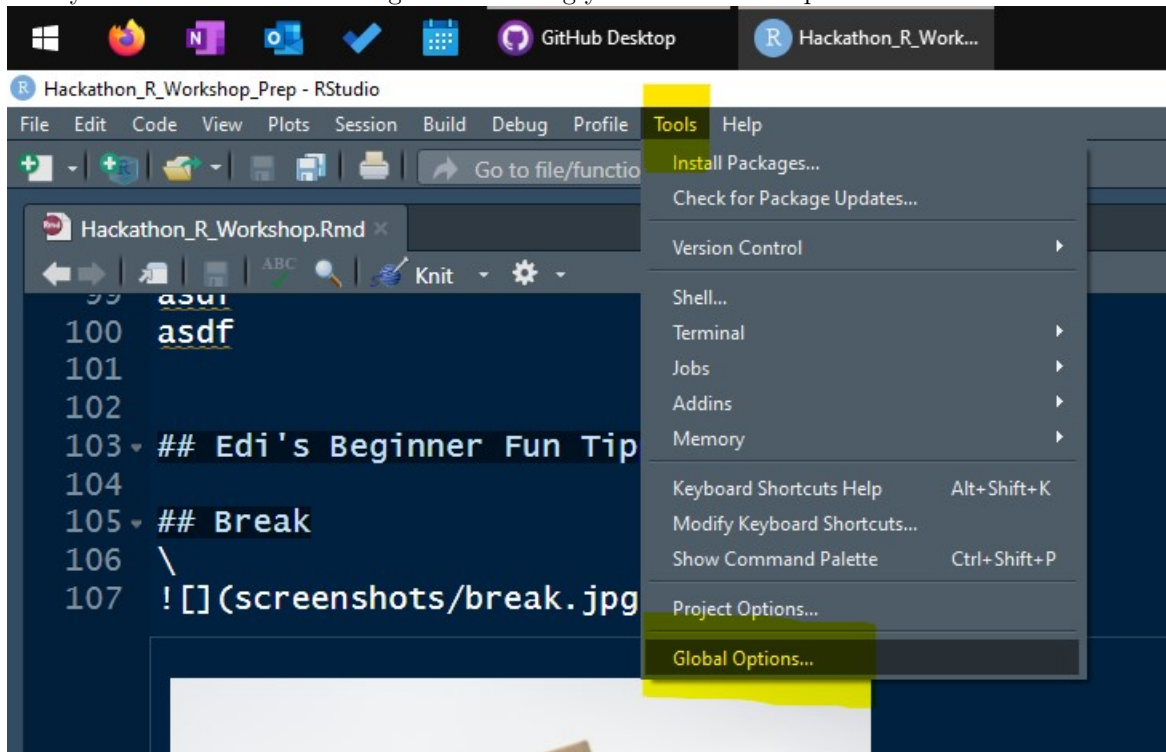
```
library(RColorBrewer)
display.brewer.all(colorblindFriendly = TRUE)
```



# RStudio Settings

## Where are the settings?

Here you find the different settings I am showing you in the next steps.

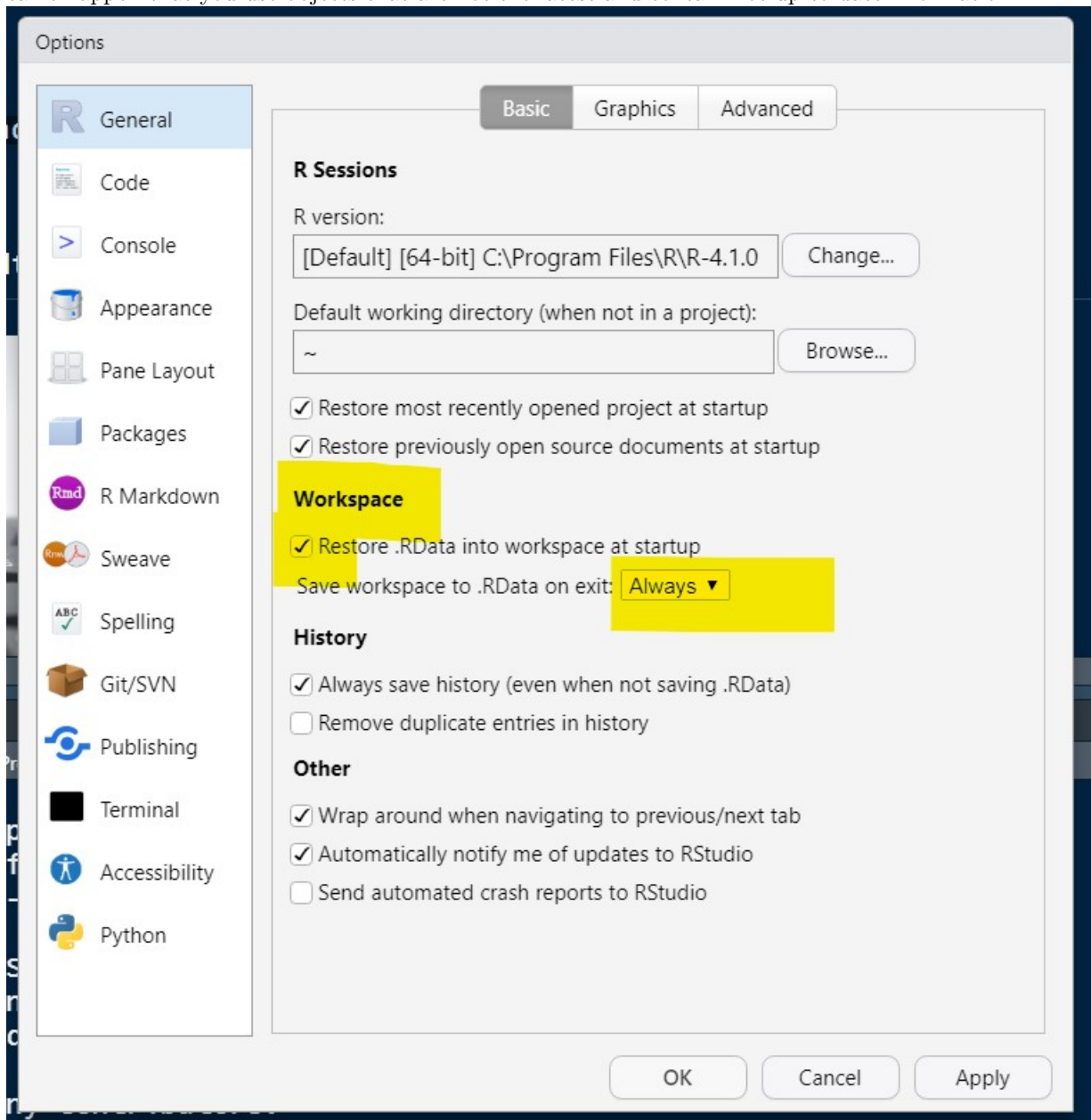


## Save Workspace

Here you can set whether the environment (aka the loaded datasets and objects) are automatically reloaded the next time you open RStudio.

Personally, I have only activated this on my small laptop, as it takes a long time to calculate my analyses.

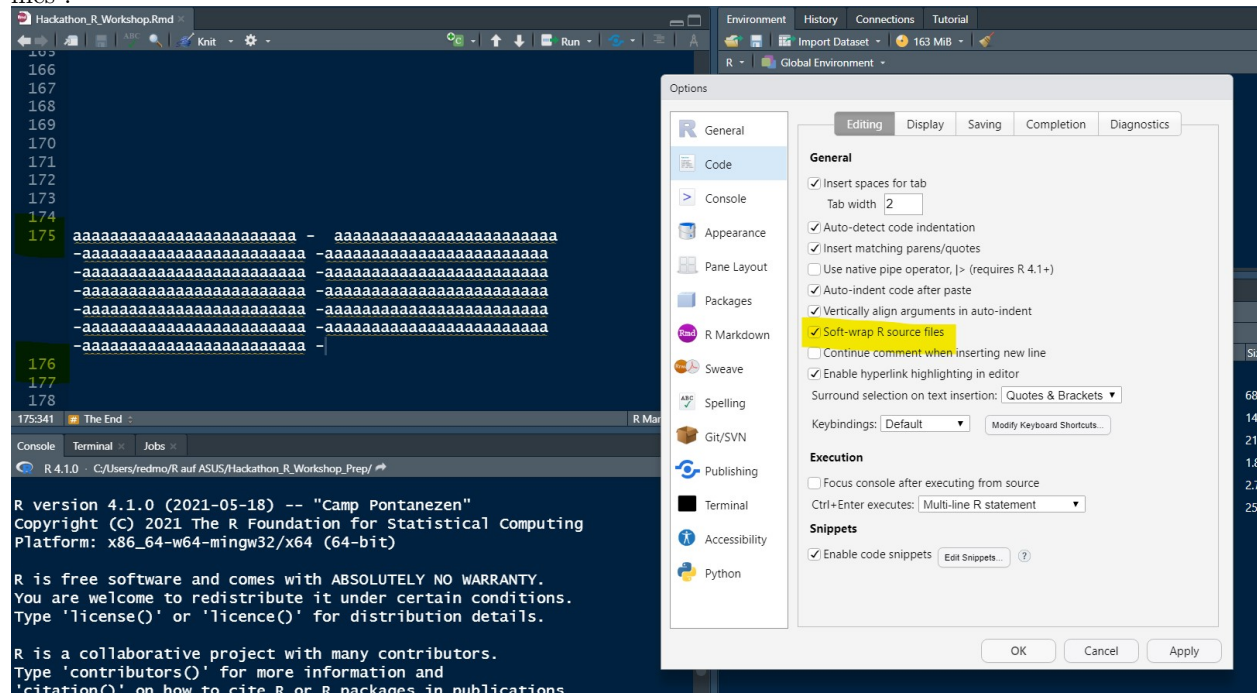
But if you have scripts that don't take 5 minutes or more I would NOT use this function. Because this way it can't happen that you use objects that are not the latest and contain not up-to-date information.



## Soft-Wrap

You can set in RStudio whether you have to scroll up/down and left/right.

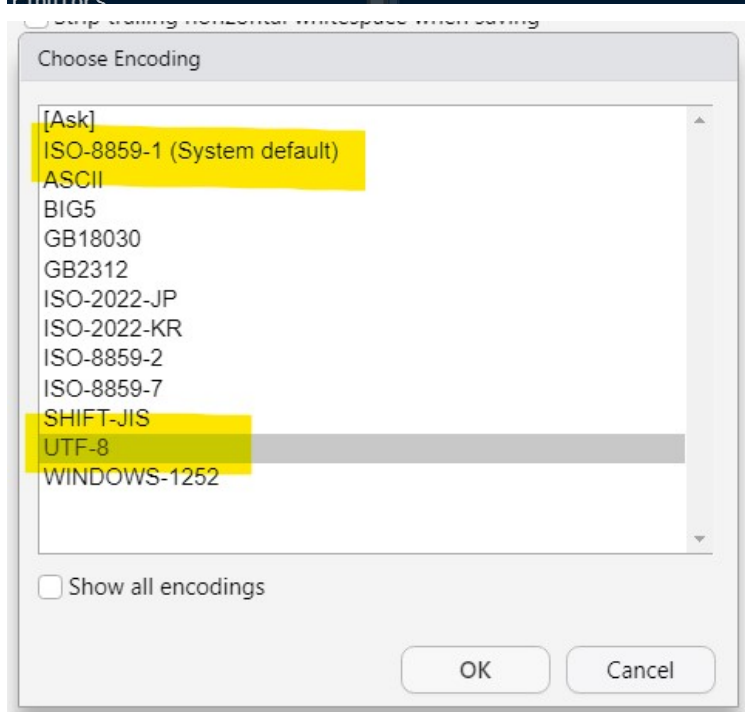
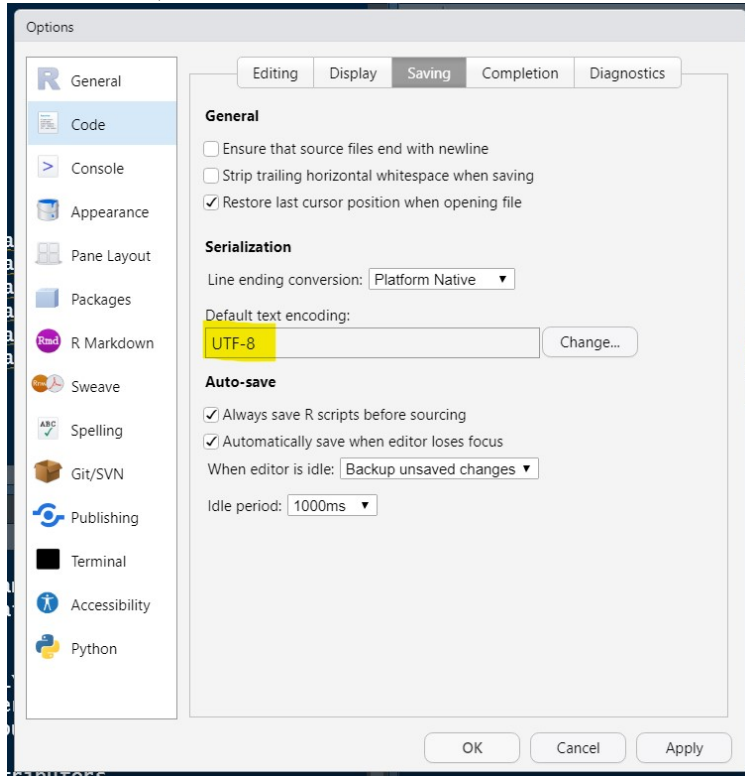
Personally, I find it much more pleasant if you only have to scroll up/down, so I activate “Soft-wrap R source files”.



## Encoding

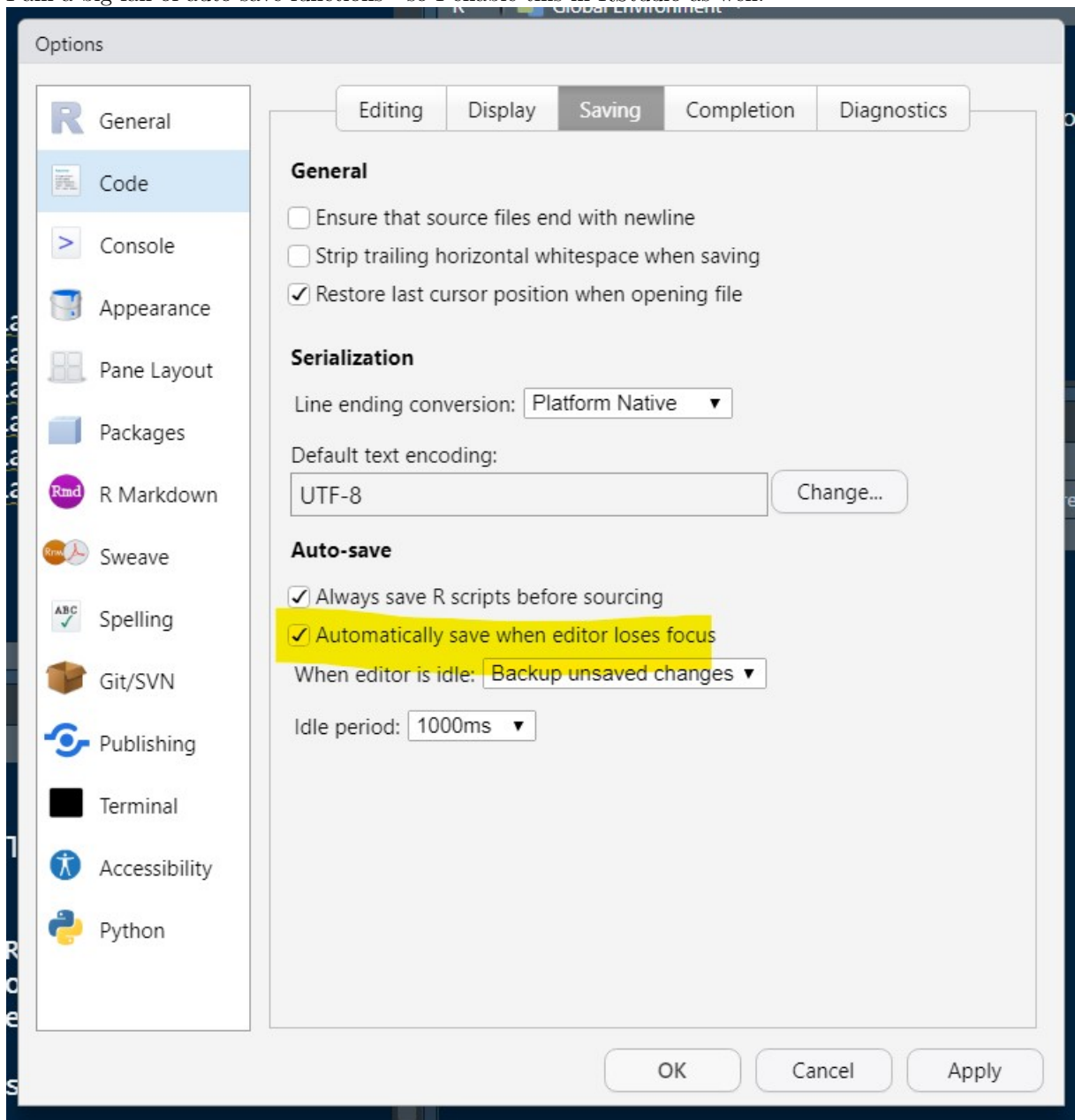
It is possible that ä and ü are displayed differently on Windows and Mac devices; this is due to different encoding settings.

Here I follow the recommendation of Eric Studerus and always use UTF-8 (some may have already heard this in his lecture).



## Auto-save

I am a big fan of auto save functions - so I enable this in RStudio as well.





## Appearance

Whenever I can, I customize user interfaces to be exactly the way I want them and that it looks nice (and makes me happy).

This can also be done in RStudio, the font, font size, color theme and zoom level can be customized.

